

# WinRELAY V2<sup>TM</sup> Expert

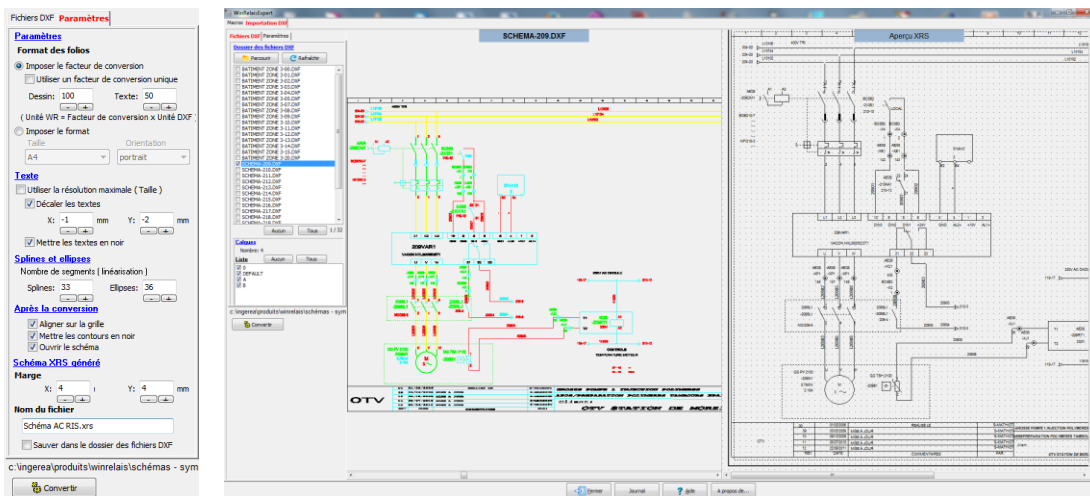
NEW

WinRelay Expert<sup>TM</sup> is the most advanced version of WinRelais<sup>TM</sup> electrical design software.

In addition to the features available in the Premium version for achieving your electrical diagrams, **WinRelay Expert** increases productivity with :

- ✔ The complete recovery of electrical diagrams, achieve with other programs, through importing files in **DXF** and **DWG** formats, which can be directly modified with **WinRelay** without having to redraw.

In addition, the symbol editor can extract a symbol of a DXF or DWG file very easily by graphical capture and save it in the symbol library.



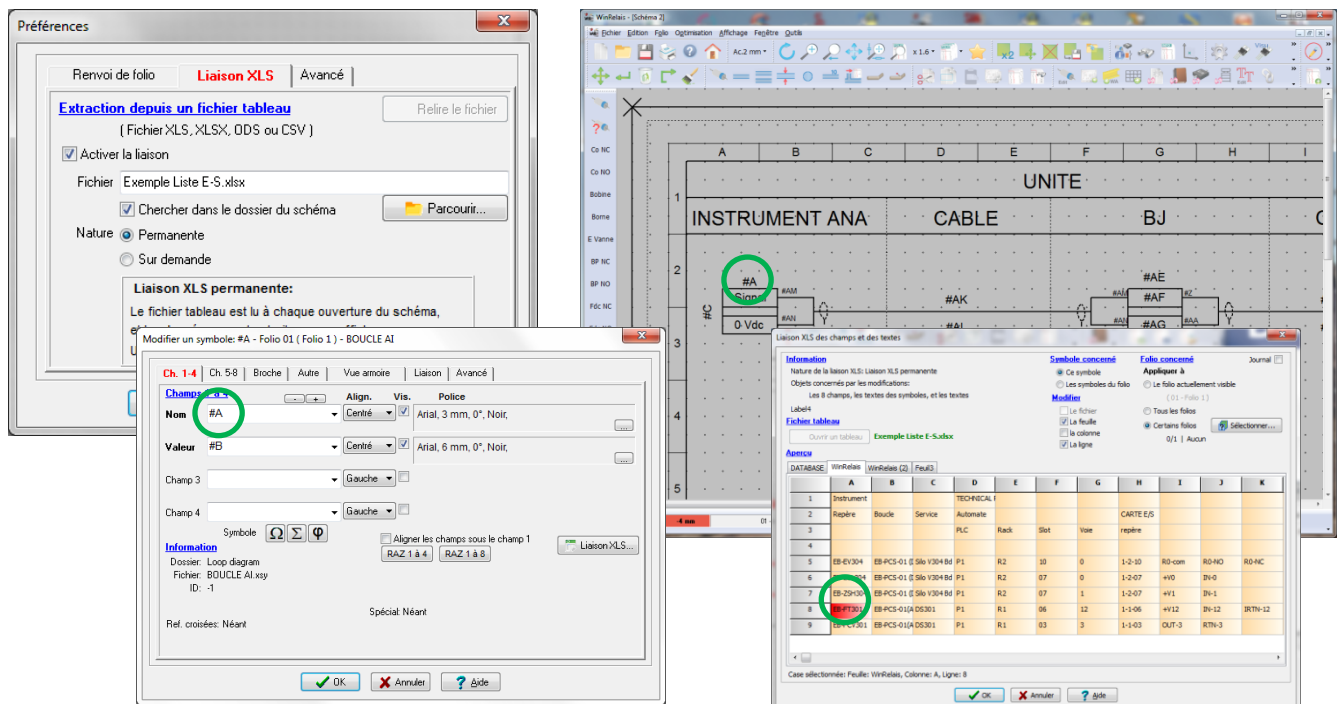
#### Features :

- ✔ DXF, DWG files selection
- ✔ Managing layers
- ✔ DXF, DWG files preview
- ✔ WinRelay format preview
- ✔ Zoom
- ✔ Panoramic
- ✔ Automatic onversion

#### Parameters :

- Conversion factor
- Diagram size
- Texts offset
- Align to grid
- Document margins
- ...

- ✔ The ability to dynamically link data from a table (Excel<sup>TM</sup>, Open Office, ...) in the fields of symbols or text fields by simply using the coordinates of the table cells.



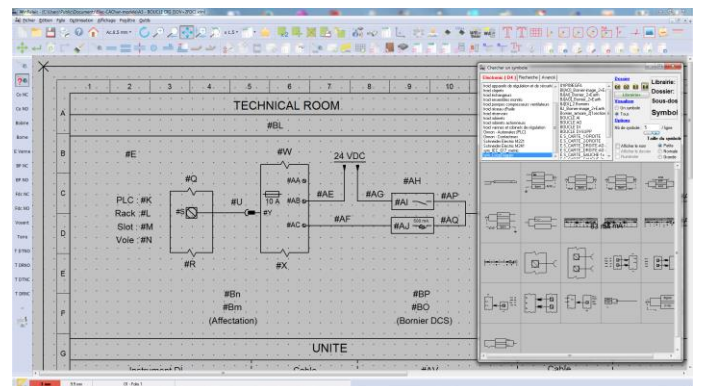
# WinRELAY V2<sup>TM</sup> Expert

- Automating tasks programmed using a macro language to include automatic generation of schemas from schema models with data recovery from a table (Excel<sup>TM</sup>, Open Office ...)

Macro	Fonction	Paramètre(s)
\$Dossier_XRM \$Dossier_XRS \$Dossier_XSY \$Dossier_Autre	Sets a variable for the templates folder (.XRM) Sets a variable for the diagrams folder (.XRS) Sets a variable to the symbol folder (.xsy) Sets a variable to other types of files	Directory
Open_File Open_Schema Open_Model	Open a un file Open a diagram (file .XRS) Open a un modèle (file .XRM)	File namen with directory
Save_File Save_File_Under	Saves the current file under the same name as its opening Save the current file with a new name	File name with directory
Add_File_SheetOne Add_File_complet Add_Sheet Add_Symbol	Adds a portfolio of over schema diagram Adds all folios diagram of the current scheme Inserts a blank sheet to the current scheme Adds a symbol to a portfolio	File name with directory Diagram name with directory Position, size, orientation and sheet name File name, sheet number, symbol name and X,Y position
Delete_Symbol Delete_Symbol_On_Sheet_Order Delete_Symbol_On_Sheet_Number	Delete symbol	Symbol name Symbole name and sheet order Symbole name and sheet number
Delete_Sheet_Number_order Delete_Sheet_Number Delete_Sheet_Nam	Delete a sheet	Sheet order Sheet number Sheet name
Effacer_Folio_Numero_ordre Effacer_Folio_Numero Effacer_Folio_Nom		Sheet order Sheet number Sheet name
Numbering_Sheet_Number Numbering_Sheet_Name Numbering_Sheet_Name_Number	Numbers sheets Name sheets Numbers and names sheets	None
Execute_WinRelay	Launches WinRelais with the current file	None
Generate_Diagram_Type_A Generate_Diagram_Type_B	Automatically generates diagrams from graphical models (.XRM) supplemented by data extraitent a table (.XLS, .XLSX, Open Office).	Name of the table containing the data, tab name and the name of the starting table cell data

## Example automated production of loops diagrams, in 4 steps :

- Creation of the table (Excel<sup>TM</sup>, LibreOffice, ...) which are indicated for each loop data and the diagram name pattern
- Drawing schema models (.XML files) from symbol libraries :



- Programming and setting macro commands before execution :
- Display loop patterns in WinRelay after automatic generation :

Feuil3	Feuil1	Feuil2
1	// Exemple de schéma généré : TIPIQUE	
2	\$dossier_xrm	C:\Users\Public\Documents\Elec-CAO\wr-modele
3	OUVRIR_FICHIER	C:\Temp\test.xls
4	Generer_Schema_Type_A	C:\Temp\WR-09-02-2015.xlsx WR A2
5	SAUVER_FICHIER_SOUS	Boucles.xls
6	EXECUTER_WINRELAIS	

